

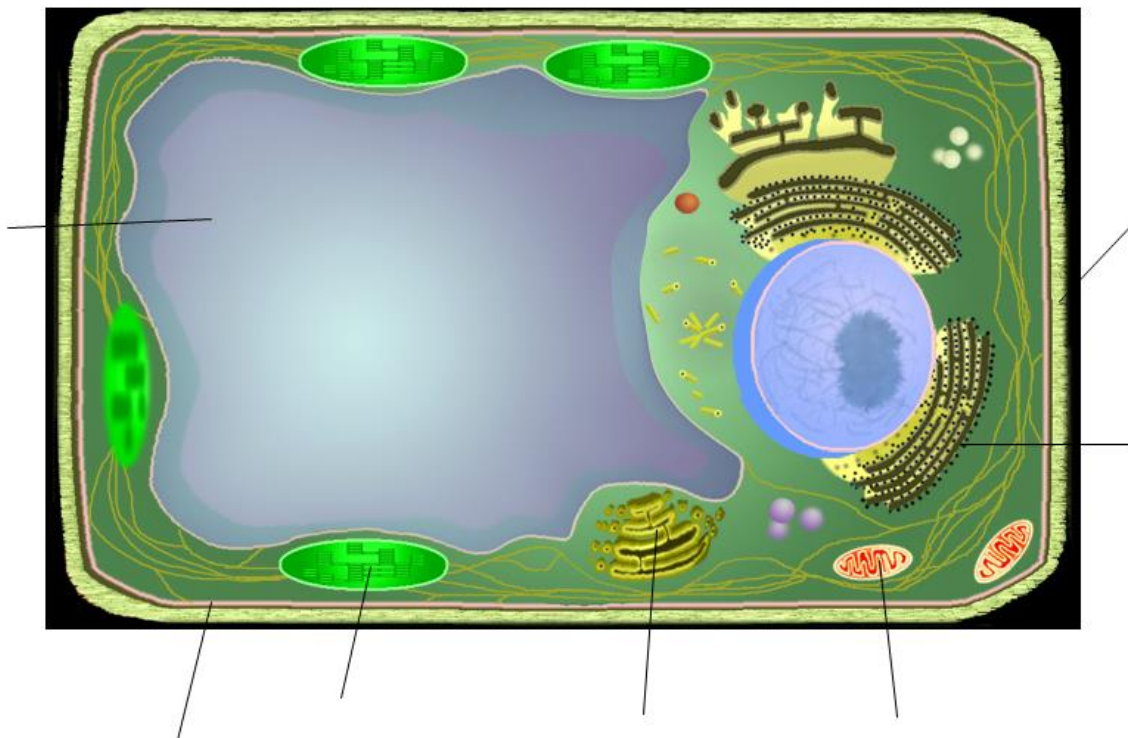
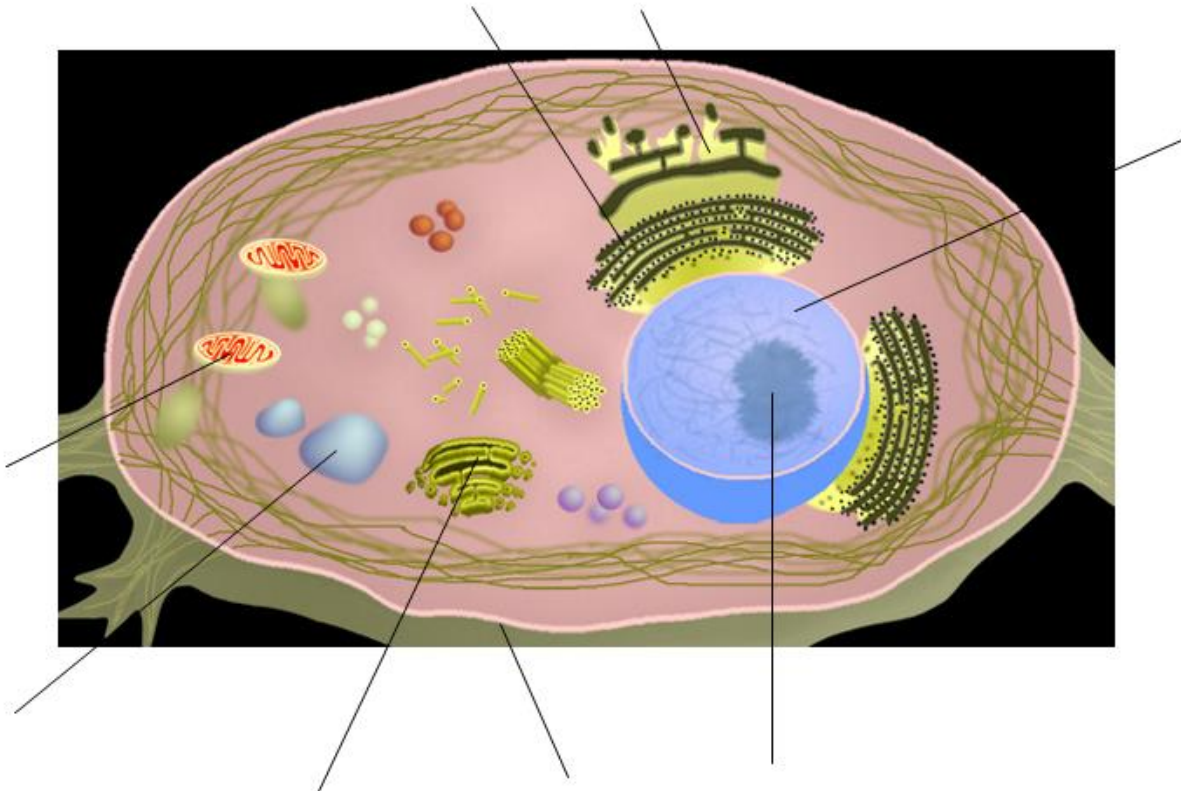
Name _____ Section _____

Cells Alive! Activity

Enter the following website into your browser:

<http://www.cellsalive.com/cells/3dcell.htm>

Part I. Labeling – Use the images to correctly label the organelles in each cell.



Part II; Animal Cell Model - (you will need to go to the "Cell Models" link to access this page; it is found under "Interactive" along the left side of the page)

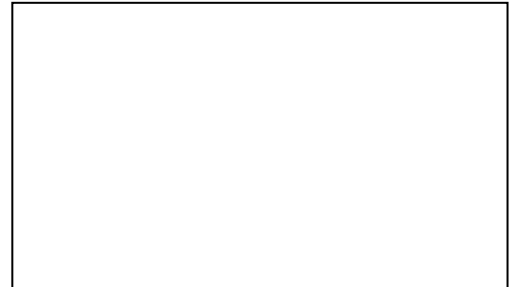
Directions : For this model, you will need to click on the various parts of the cell to go to a screen that tells you about the parts. Answers to the following questions are found there.

1. What does the mitochondria do?

Sketch each of the following.

2. How big are mitochondria?

Mitochondria



3. What does the Golgi Apparatus do?

Golgi Apparatus



4. Where is the nucleolus found?

5. What does the nucleolus do?

Nucleus and Nucleolus

6. What is the function of the ribosomes?



7. What is the function of the lysosome?

Part III: Plant Cell Model - (you will need to click on the "Plant Cell" part on the bottom of the interactive Cell Models)

1. What are some of the purposes of the cell wall?

Sketch the following

2. What makes the plant cells green?

3. In plant cells, what does the vacuole do?

| |
|-------------|
| Chloroplast |
| Vacuole |

Part E: Overview : For the chart below, write "yes" or "no" in the boxes explaining if the plant cell or the animal cell has this organelle.

| | Chloroplast | Vacuole | Ribosome | Mitochondria | DNA | ER | Cell Wall | Golgi Apparatus |
|-------------|-------------|---------|----------|--------------|-----|----|-----------|-----------------|
| Plant Cell | | | | | | | | |
| Animal Cell | | | | | | | | |

give a description of:

The Centrioles

A bacteria cell
