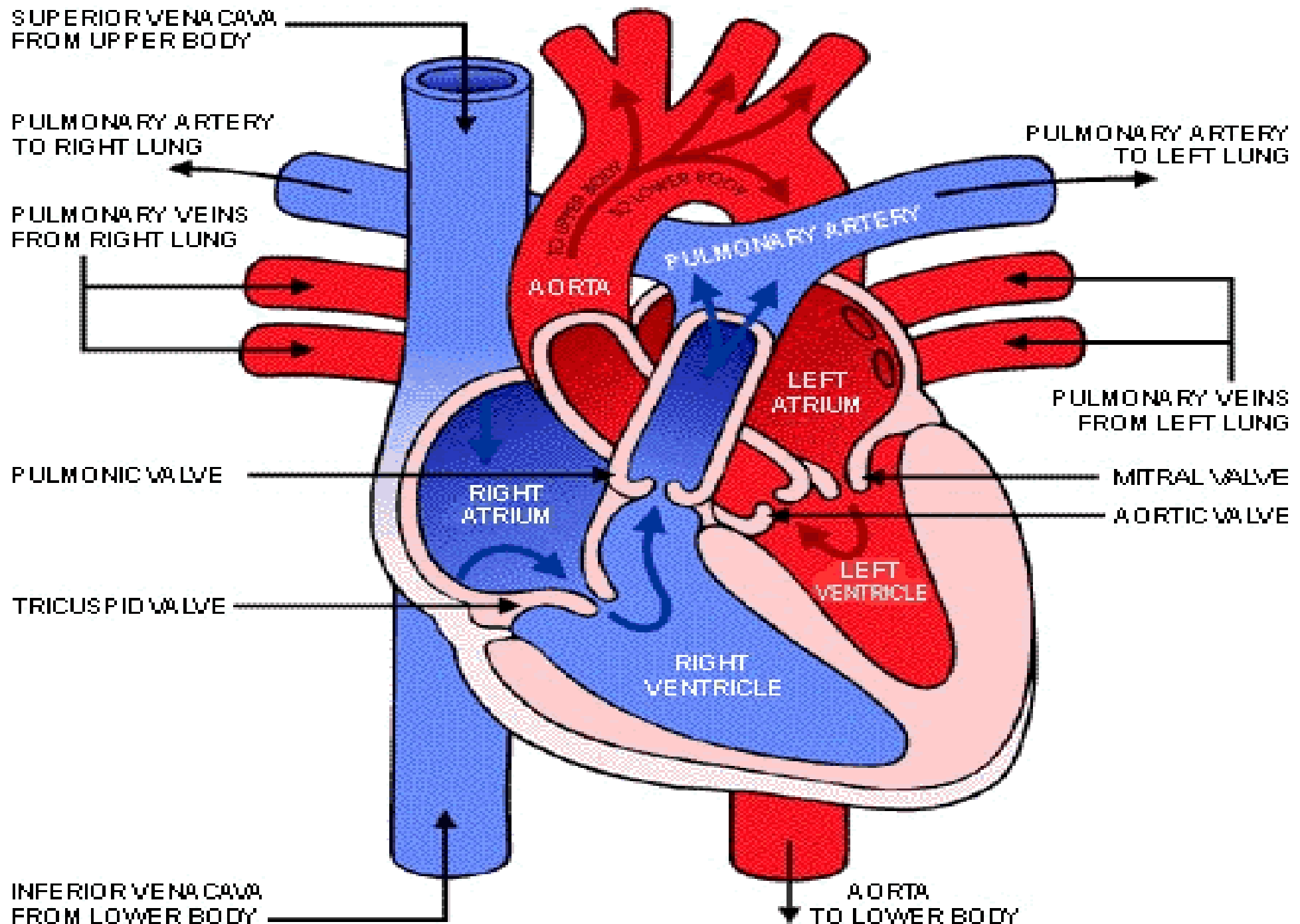


# CIRCULATORY SYSTEM

**The circulatory system transports, gases, nutrients, hormones and antibodies through the body.**





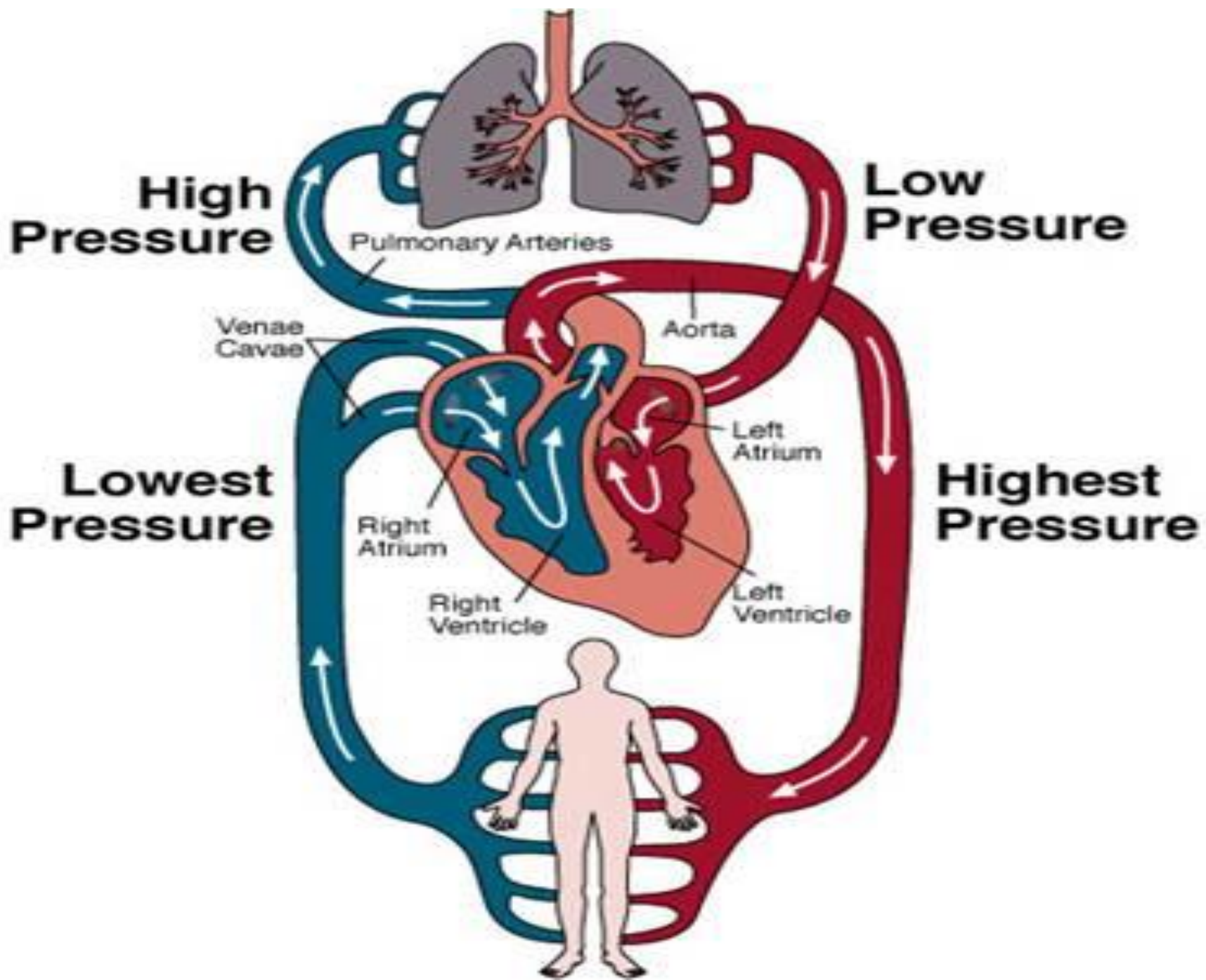
# THE HEART-

1. Like a pump, the heart drives the circulatory system.

2. composed of a system which brings deoxygenated (no oxygen) blood into lungs to oxygenate it (with oxygen)-then back to the heart to be pumped through the body.

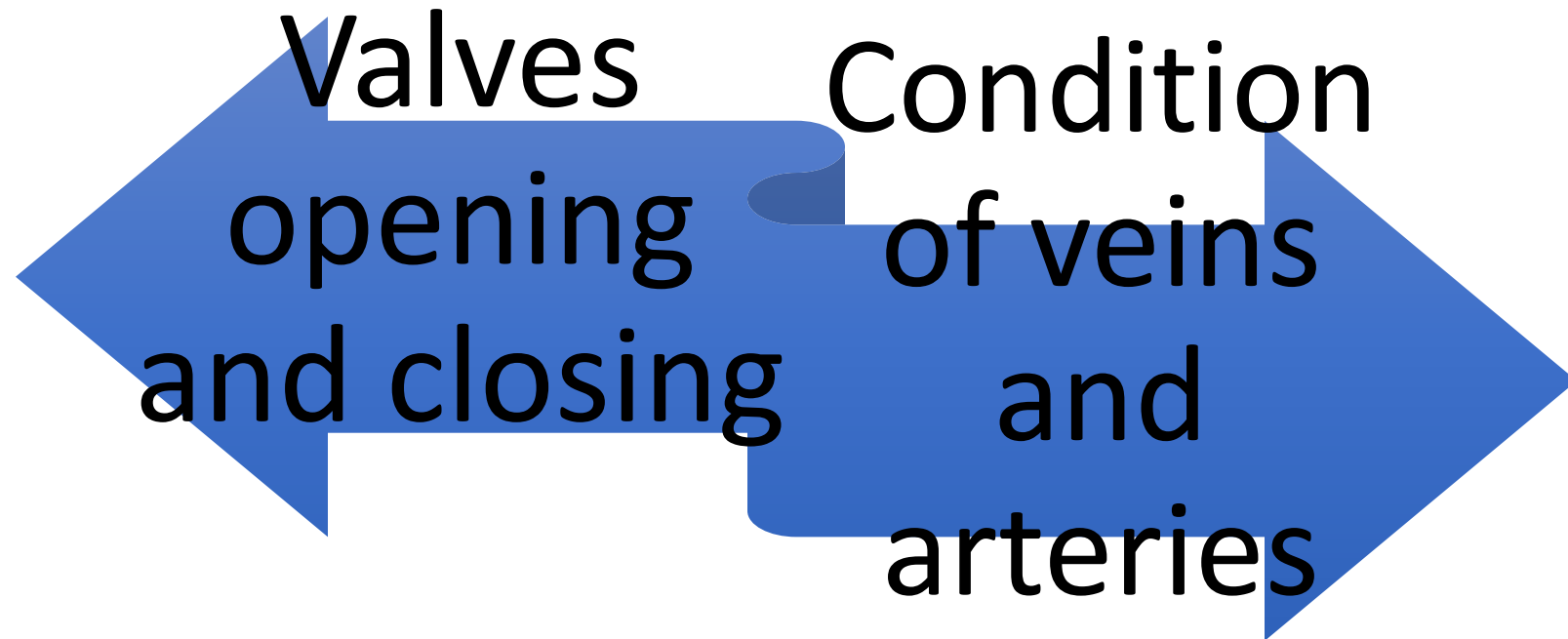
## THE ORDER OF THE BLOOD'S PATH:

Deoxygenated blood goes through  
The VENA CAVA->RIGHT ATRIUM->  
RIGHT VENTRICLE->PULMONARY  
ARTERIES->CAPILLARIES IN THE  
LUNGS (where it oxygenates the  
blood)->PULMONARY VEINS->LEFT  
ATRIUM->LEFT VENTRICLE->AORTA  
->BODY TISSUES AND ORGANS



# HEART MOTIONS:

Physical:



## **Electrical heart motions:**

-AV node controls electrical contractions to pace the heart beat.

-the heart “beat” is when the heart pulls and pushes the blood through the body to keep it oxygenated.

# What is in our blood??????????

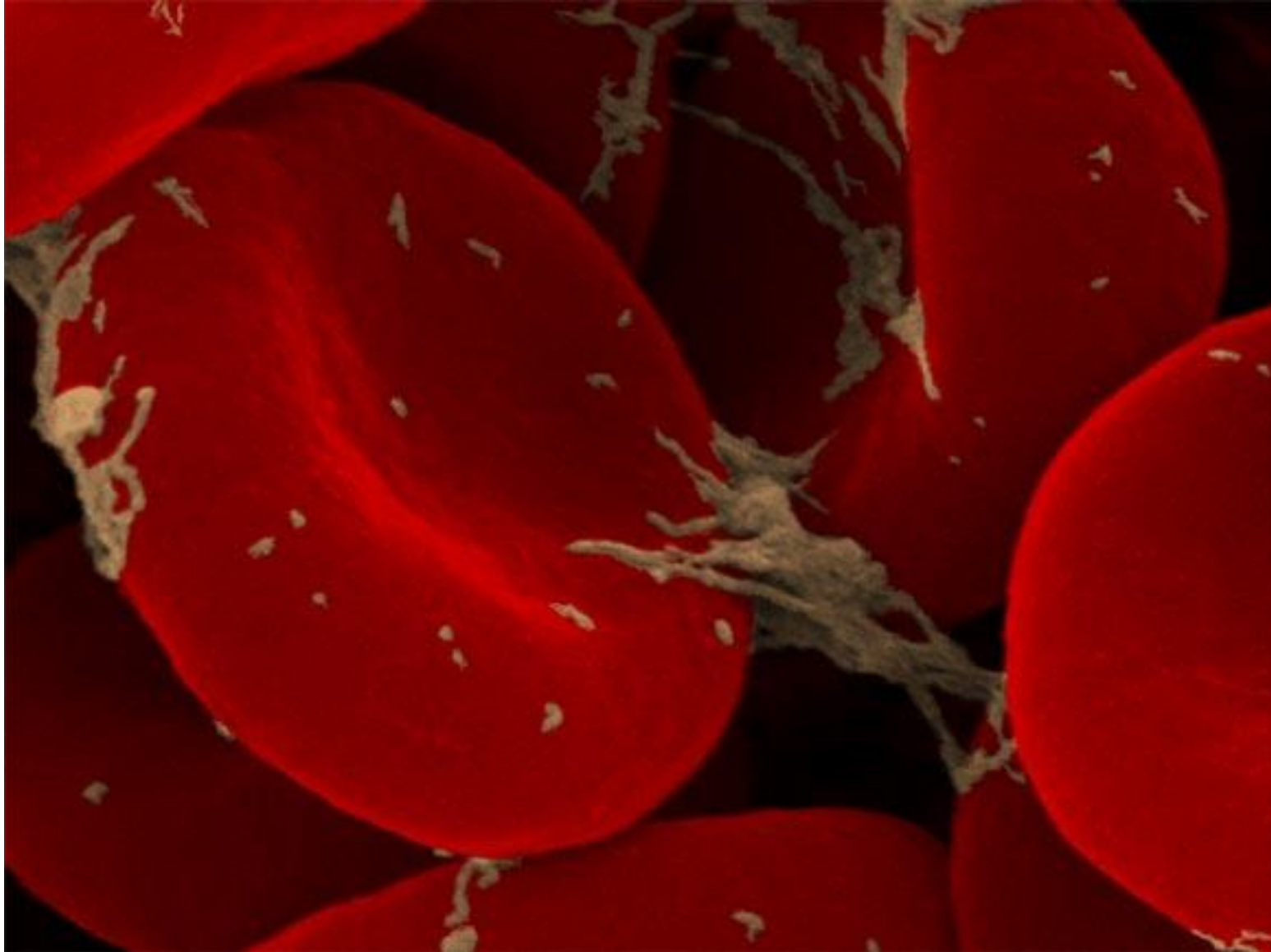
Red blood cells carry oxygen

White blood cells fight disease

The rest is plasma and platelets

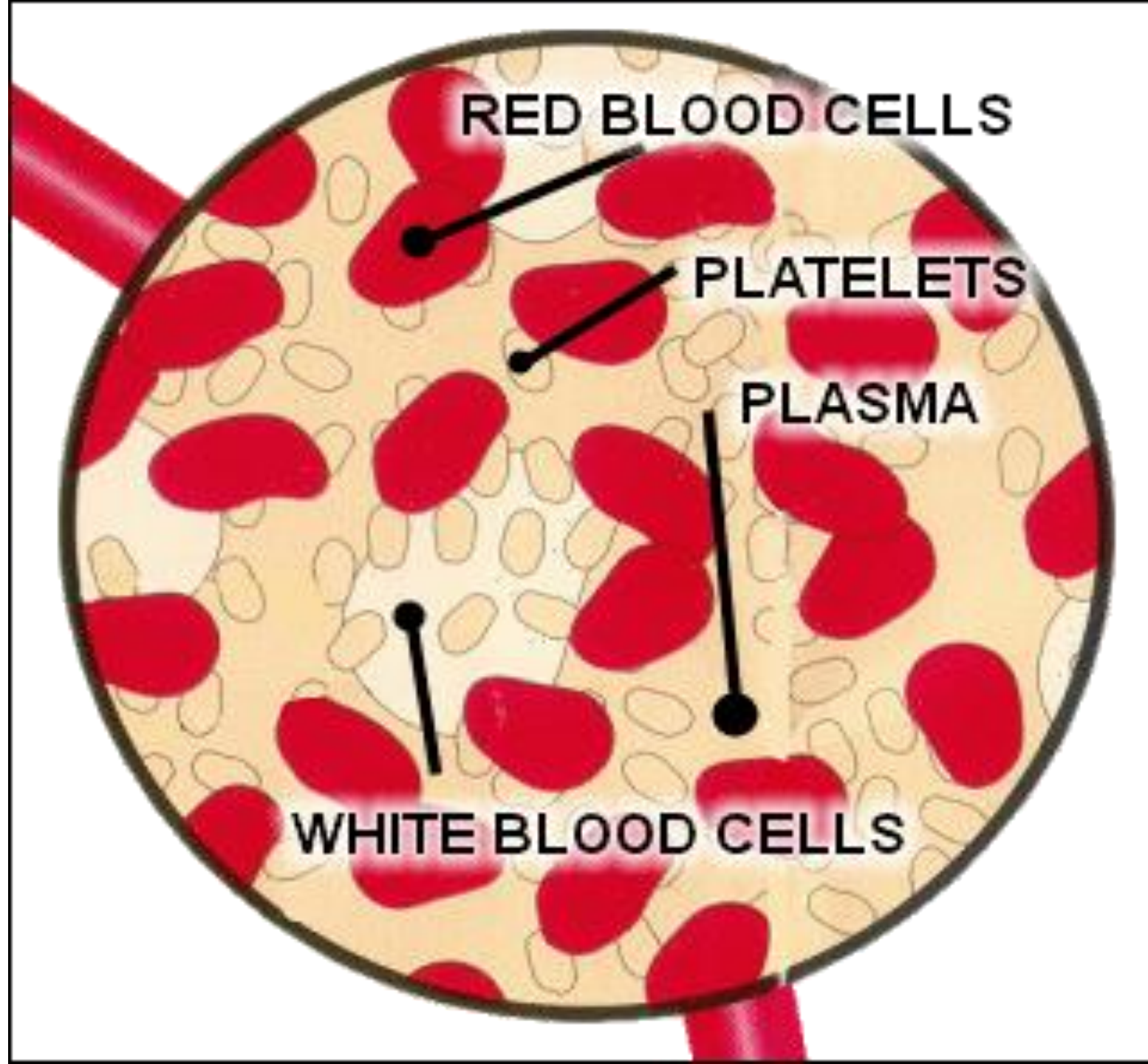


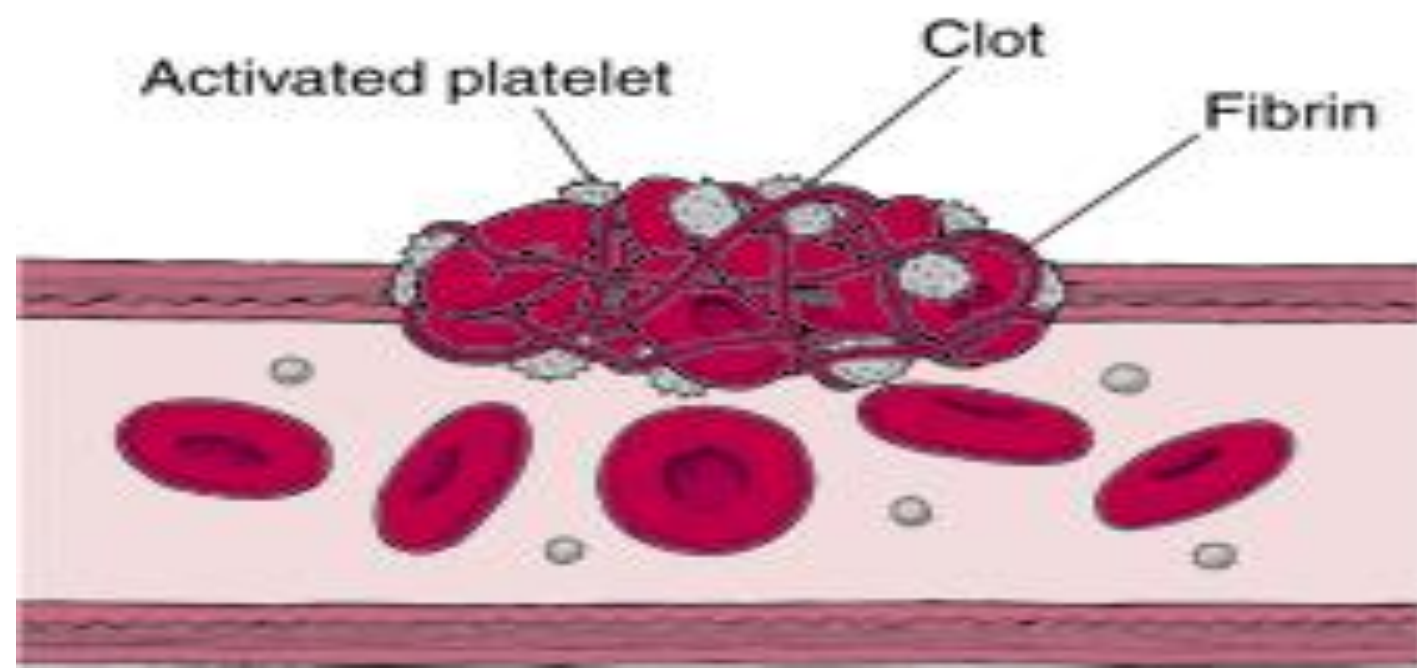
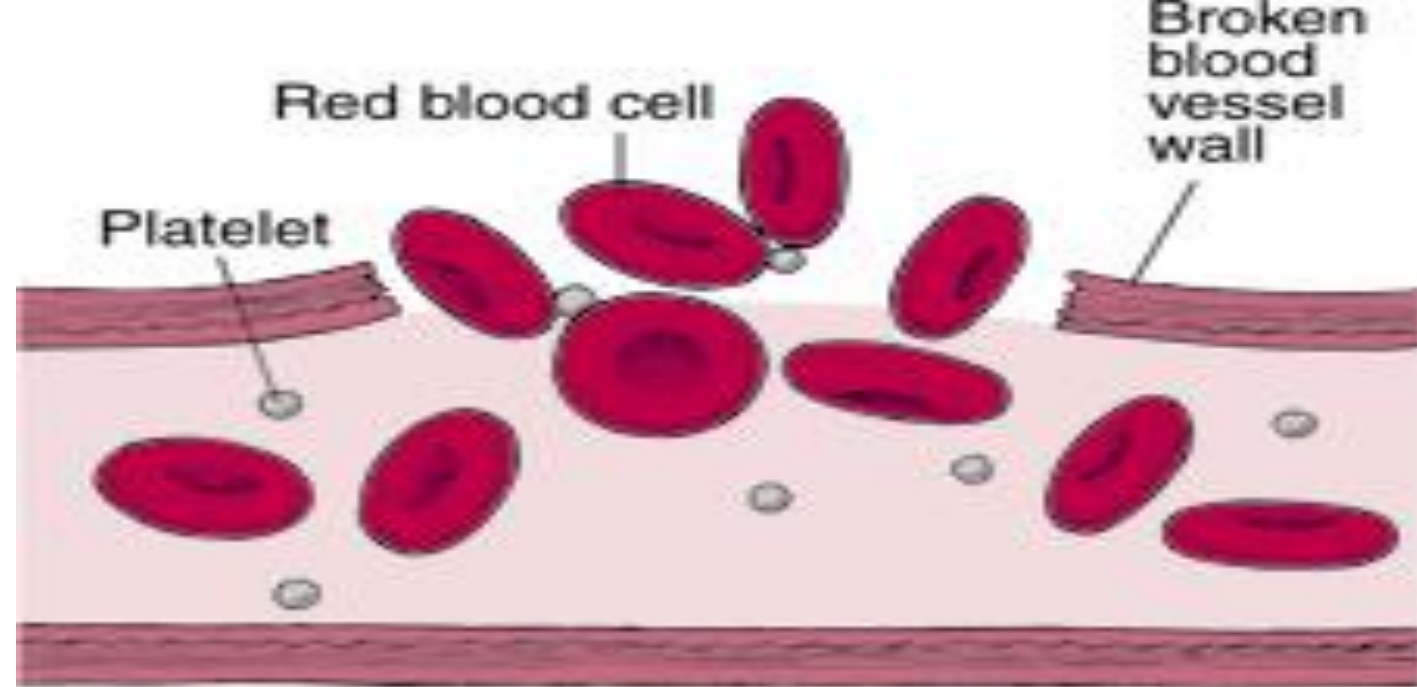
# Red blood cells



Plasma is the fluid of the blood. It transports everything except oxygen.

Platelets clot the blood (otherwise you would bleed to death if you got a cut.





		Father's Blood Type				
		A	B	AB	O	
Mother's Blood Type	A	A or O	A, B, AB, or O	A, B, or AB	A or O	Child's Blood Type
	B	A, B, AB, or O	B or O	A, B, or AB	B or O	
	AB	A, B, or AB	A, B, or AB	A, B, or AB	A or B	
	O	A or O	B or O	A or B	O	

# FEEDBACK MECHANISMS

Help maintain Homeostasis!

1. changes in the heart or respiratory rate in response to increased activity in muscle cells.

2. changes in blood sugar levels by insulin from the pancreas.